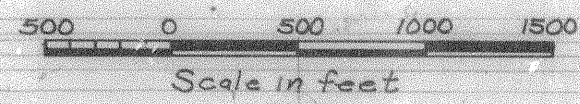


59953

Received July 27 1966 Time 10:45 AM  
Recorded July 27 1966  
Plat Book 11 Page 25  
Signed W. Campbell Recorder, Guernsey County, Ohio  
Fee \$3.00 Paid July 27 1960



# LOCATION PLAN

## GUE. - 70-5.84 - GUERNSEY COUNTY LIMITED ACCESS

Guernsey Co. 70-5.84  
R/W Plan  
Limited Access  
Note: This Instrument Prepared by the Ohio Dept. of Hwys., under the Supervision of Harry P. Brannon, P.E. No. 15394  
Signed: *Harry P. Brannon*  
Registered Surveyor No. 2694  
Resident Division Deputy Director.  
Date: 7/17-60

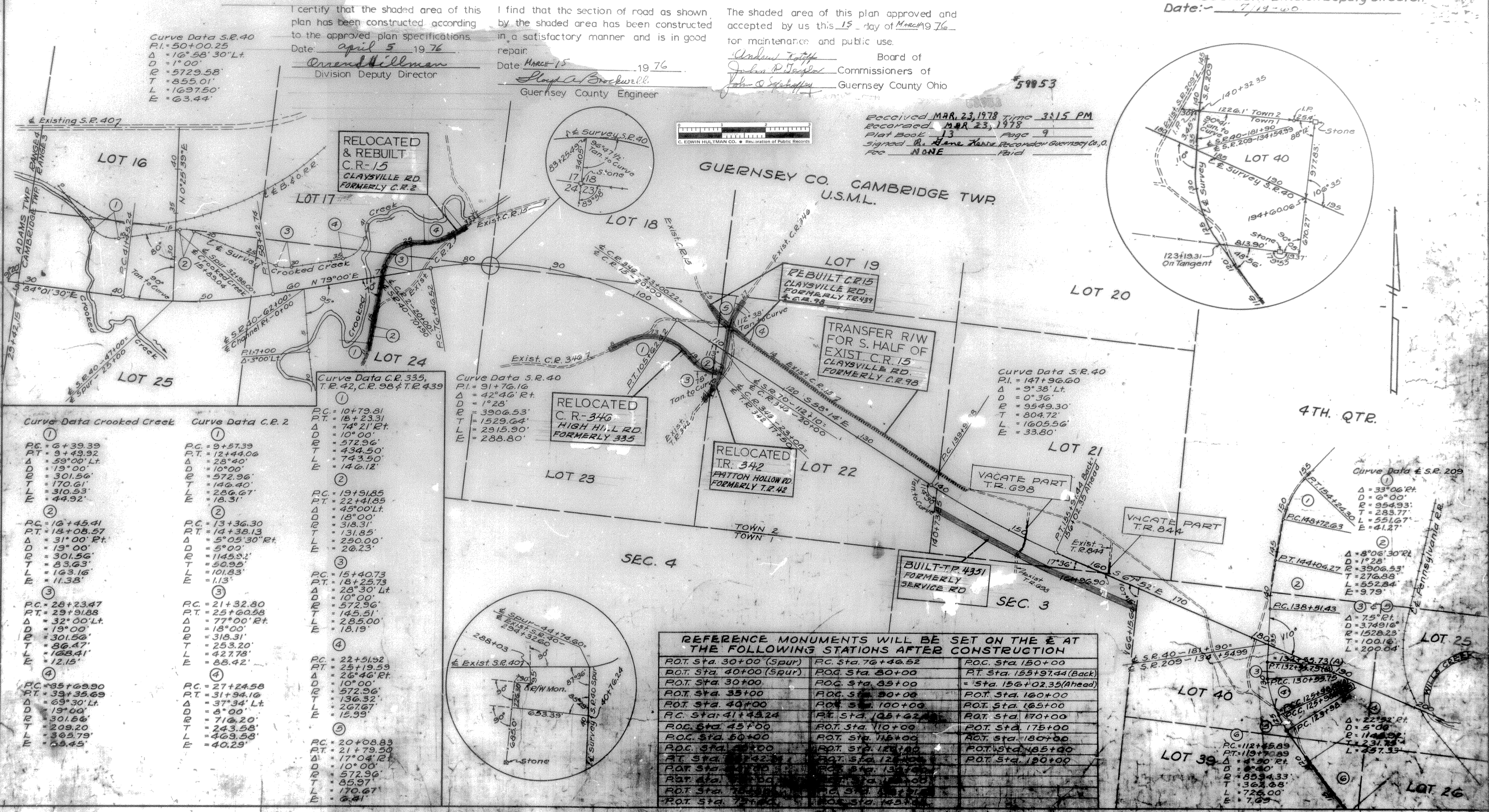
1860

I certify that the shaded area of this plan has been constructed according to the approved plan specifications.  
Date: April 5 1976  
*Ormond Hillman*  
Division Deputy Director

I find that the section of road as shown by the shaded area has been constructed in a satisfactory manner and is in good repair.  
Date: March 15 1976  
*Stanley Brockwell*  
Guernsey County Engineer

The shaded area of this plan approved and accepted by us this 15 day of March 1976 for maintenance and public use.  
*Arthur J. Hoff* Board of  
*Julian P. Taylor* Commissioners of  
*John C. Spitzer* Guernsey County Ohio

Received MAR. 23, 1978 Time 3:15 PM  
Recorded MAR. 23, 1978  
Plat Book 13 Page 9  
Signed *Gene Zane* Recorder Guernsey Co., O.  
Fee NONE Paid



Curve Data Crooked Creek

1	PC = 6+39.39	PT = 9+49.92	Δ = 59°00' Lt.	D = 19°00'	E = 301.56'	T = 170.61'	L = 310.53'	E = 44.92'
2	PC = 16+45.41	PT = 18+08.57	Δ = 31°00' Rt.	D = 19°00'	E = 301.56'	T = 83.63'	L = 163.16'	E = 11.38'
3	PC = 28+23.47	PT = 29+91.88	Δ = 32°00' Lt.	D = 19°00'	E = 301.56'	T = 86.47'	L = 168.41'	E = 12.15'
4	PC = 35+69.90	PT = 39+35.69	Δ = 69°30' Lt.	D = 19°00'	E = 301.56'	T = 209.20'	L = 365.79'	E = 66.45'

Curve Data C.R. 2

1	PC = 9+57.39	PT = 12+44.06	Δ = 28°40'	D = 19°00'	E = 572.96'	T = 146.40'	L = 286.67'	E = 18.31'
2	PC = 13+36.30	PT = 14+38.13	Δ = 5°05'30" Rt.	D = 5°00'	E = 1145.31'	T = 50.95'	L = 101.83'	E = 1.13'
3	PC = 15+40.73	PT = 18+25.73	Δ = 28°30' Lt.	D = 10°00'	E = 572.96'	T = 145.51'	L = 285.00'	E = 18.19'
4	PC = 22+51.52	PT = 25+19.59	Δ = 26°46' Rt.	D = 10°00'	E = 572.96'	T = 136.32'	L = 267.67'	E = 15.99'
5	PC = 20+08.83	PT = 21+79.50	Δ = 17°04' Lt.	D = 10°00'	E = 572.96'	T = 85.97'	L = 170.67'	E = 0.41'

Curve Data C.R. 335, T.R. 42, C.R. 98 & T.R. 439

1	PC = 10+79.81	PT = 18+23.31	Δ = 74°21' Rt.	D = 10°00'	E = 434.50'	T = 74.50'	L = 146.12'	E = 0.00'
2	PC = 19+91.85	PT = 22+41.85	Δ = 45°00' Lt.	D = 18°00'	E = 318.31'	T = 131.85'	L = 290.00'	E = 26.23'
3	PC = 15+40.73	PT = 18+25.73	Δ = 28°30' Lt.	D = 10°00'	E = 572.96'	T = 145.51'	L = 285.00'	E = 18.19'
4	PC = 22+51.52	PT = 25+19.59	Δ = 26°46' Rt.	D = 10°00'	E = 572.96'	T = 136.32'	L = 267.67'	E = 15.99'
5	PC = 20+08.83	PT = 21+79.50	Δ = 17°04' Lt.	D = 10°00'	E = 572.96'	T = 85.97'	L = 170.67'	E = 0.41'

Curve Data S.R. 40

1	PC = 91+76.16	PT = 91+76.16	Δ = 42°46' Rt.	D = 1°28'	E = 3906.53'	T = 1529.64'	L = 2915.90'	E = 288.80'
---	---------------	---------------	----------------	-----------	--------------	--------------	--------------	-------------

Curve Data S.R. 40

1	PC = 147+96.60	PT = 91°38' Lt.	D = 0°36'	E = 9549.30'	T = 804.72'	L = 1605.56'	E = 33.80'
---	----------------	-----------------	-----------	--------------	-------------	--------------	------------

REFERENCE MONUMENTS WILL BE SET ON THE E AT THE FOLLOWING STATIONS AFTER CONSTRUCTION

ROT Sta. 30+00 (Spur)	RC Sta. 76+46.52	ROC Sta. 150+00
ROT Sta. 40+00 (Spur)	ROC Sta. 80+00	RT Sta. 155+97.44 (Back)
ROT Sta. 30+00	ROC Sta. 85+00	= Sta. 156+02.35 (Ahead)
ROT Sta. 35+00	ROC Sta. 90+00	ROT Sta. 160+00
ROT Sta. 40+00	ROC Sta. 100+00	ROT Sta. 165+00
RC Sta. 41+43.24	RT Sta. 105+00	ROT Sta. 170+00
ROC Sta. 45+00	ROT Sta. 110+00	ROT Sta. 175+00
ROC Sta. 50+00	ROT Sta. 115+00	ROT Sta. 180+00
ROC Sta. 55+00	ROT Sta. 120+00	ROT Sta. 185+00
RT Sta. 42+00	ROT Sta. 125+00	ROT Sta. 190+00
ROT Sta. 50+00	ROT Sta. 130+00	
ROT Sta. 60+00	ROT Sta. 140+00	
ROT Sta. 70+00	ROT Sta. 150+00	
ROT Sta. 75+00	ROT Sta. 155+00	